



by *Vinzant*

LUXURY COMPUTER SYSTEMS

JUGGERNAUT

INTERNET DRIVING MACHINE



Contemporary

The all new Juggernaut design features improvements over the original OmniCenter including a smaller footprint.

Vinzant

Vinzant Computer Entertainment System designs are revolutionary. They far surpass any computer furniture solution available on the market today.



Ergonomic Maximum Productivity

Vinzant designs embrace standard PC technologies now and into the future. A comprehensive computing environment that is highly ergonomic and masterfully organized resulting in a highly productive experience.

OMNICENTER



Classic



Office-In-a-Box



VINZANT ENGINEERED FURNITURE DESIGNS

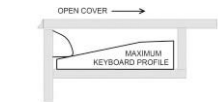
GULL WING DISPLAY DOOR
HOUSES PRINTER
COMPARTMENT



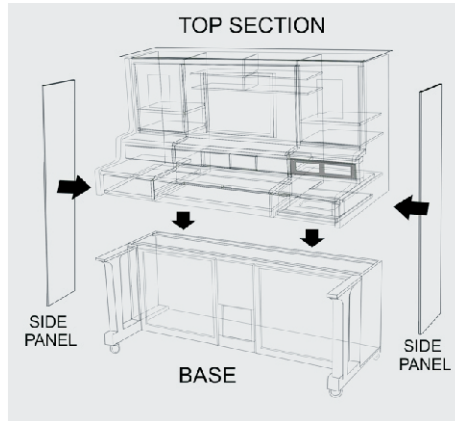
INTEGRATED
VIDEO CAMERA



COOLING SYSTEM
W/SINGLE EXTERIOR
CABLE



LOCKABLE KEYBOARD
COMPARTMENT FEATURES
BURLED WRIST REST



TWO PIECE DESIGN PROVIDES
MAXIMUM CONFIGURATION OPTIONS
AND MAKES IT EASY TO MOVE



COMFORTABLY
SEATS TWO



REMOTE 5 1/4" DRIVE
BAY ASSEMBLY



REMOTE PC CONTROL
MODULE W/USB



SWING OUT PC CASE SHELF



UNIVERSAL VESA MOUNT DISPLAY
ADAPTER WITH SWIVEL ACTION

REMOVABLE DISPLAY TRIM



90 DEGREE INDUSTRIAL POWER
STRIPS AND CABLE TRAY

VINZANT HOME SERVER FEATURES



ILLUMINATED
PRINTER COMPARTMENT



UNIVERSAL
REMOTE DRIVE BAYS



UNIVERSAL SWIVEL DISPLAY ADAPTER



LAPTOP DOCK
AND



WRITING SURFACE

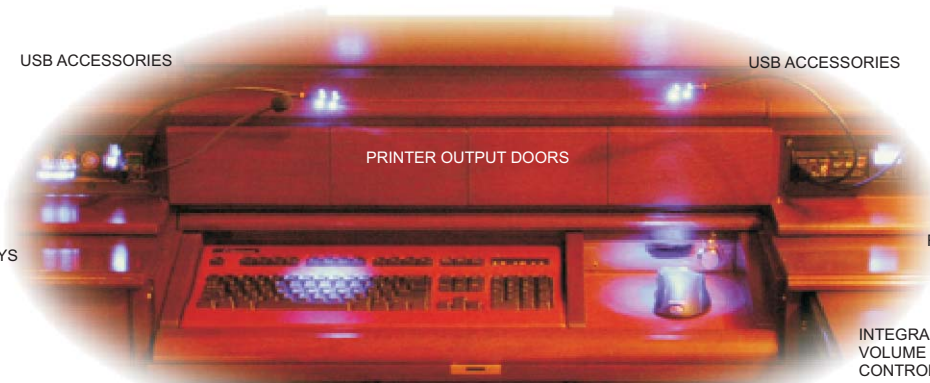
A TECHNOLOGICAL MASTERPIECE

USB ACCESSORIES

USB ACCESSORIES



DEVICE DOCK &
POWER STATION



PRINTER OUTPUT DOORS

REMOTE DRIVE BAYS

REMOTE DRIVE BAYS

INTEGRAL
VOLUME
CONTROL



WOOD WRIST WREST

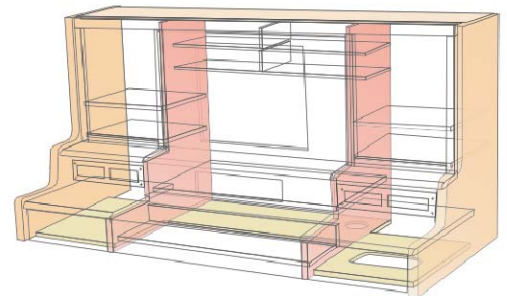
LEATHER KEYBOARD

LOCKABLE
KEYBOARD
COMPARTMENT

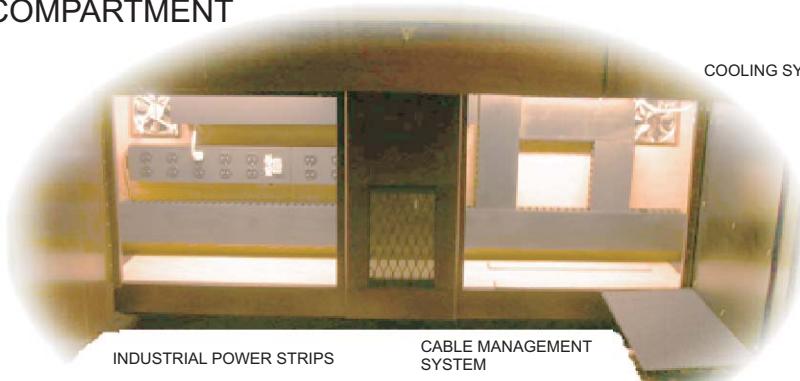
MS WIRELESS
LEATHER MOUSE

LEATHER MOUSEPAD

SCANNER
COMPARTMENT



HIGHLY
ENGINEERED



INDUSTRIAL POWER STRIPS

CABLE MANAGEMENT
SYSTEM

COOLING SYSTEM

UNIVERSAL BASE

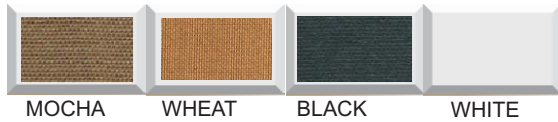
UNIQUE PULL OUT
PC CASE SHELF

VINZANT HOME SERVER CONFIGURATION GUIDE

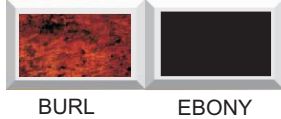
FINISH



GRILL CLOTH



WRIST REST



DESIGNER OPTIONS

	PART NO.	VHS-LX	VHS-EQ	VHS-XL
FINISH	CHERRY	CF		
	BLACK WALNUT	WF		
	OAK	OF		
	EBONY	EF	NOT AVAIL	
GRILL CLOTH	MOCHA	MG		
	WHEAT	WG		
	BLACK	BG		
	WHITE	WG		
TOP	NO OVERHEAD LIGHTING	T1		
	OVERHEAD LIGHTING	T2		
SIDE PANELS	CHOOSE FINISH ABOVE	SP		
WRIST WREST	BURL OR EBONY	WW		

EXAMPLE P/N:

HEAD UNIT CONFIGURATION

		PART NO.	VHS-LX	VHS-EQ	VHS-XL
DISPLAY COMPARTMENT	INTEGRAL COMPUTER DISPLAY	TD / SD	SD	TD	TD
	<small>TD=TOUCHSCREEN SD=STANDARD DISPLAY</small>				
	GULL WING DISPLAY DOOR	GM / GA	GM	GM	GA
	<small>M=MANUAL A=AUTOMATIC</small>				
	UNIVERSAL VESA COMPATIBLE SWIVEL DISPLAY MOUNT (SPECIFY DISPLAY SIZE)	UM	UM	UM	UM
	INTEGRAL INTERNET CAMERA	IC	---	IC	IC
HP STYLE PRINTER	PP	---	PP	PP	
MEDIA STORAGE SHELVES	SS	---	SS	SS	
COMPARTMENT LIGHT	CL	---	CL	CL	
KEYBOARD COMPARTMENT	WOOD KEYBOARD BY HOLZKONTOR*	WK			
	LEATHER KEYTRONIC KEYBOARD BYVINZANT	LK	---	LK	LK
	STANDARD BLACK KEYTRONIC	SK	---	---	---
	MICROSOFT WIRELESS LEATHER MOUSE	LM	LM	LM	LM
VINZANT INTEGRAL VOLUME CONTROL	IVC	IVC	IVC	IVC	
SCANNER COMPARTMENT	STANDARD DOCUMENT SCANNER	SC	---	SC	SC
2.1 AUDIO SYSTEM	RECOMMEND KLIPSCH PROMEDIA 2.1	AS	---	AS	AS
INTERNET MODEM/ROUTER	STANDARD INTERNET MODEM / ROUTER	IR	---	---	IR
REMOTE DRIVE BAYS	DVD DRIVE (INCLUDES USB ADAPTER)	NO.	4	4	4
		DVD	1	1	2
	I/O PANEL	IO	---	1	1
	REMOTE PC CONTROL MODULE BYVINZANT	RC	---	1	1
STANDARD FEATURES	DEVICE DOCK / POWER STATION	DD	DD	DD	DD
	PULL OUT LAPTOP / WORK SURFACE	WS	WS	WS	WS

EXAMPLE P/N:

JUGGERNAUT HEAD UNIT



SIDE PANELS



UNIVERSAL BASE CONFIGURATION

MECHANICAL

SWINGOUT PC CASE SHELF
2 1/2" OVERSIZED BRASS CASTERS
CABLE MANAGEMENT SYSTEM

PART NO.	VHS-LX	VHS-EQ	VHS-XL
SS	SS	SS	SS
BC	BC	BC	BC
CM	---	CM	CM

ELECTRICAL

SERVICE LIGHTS
INDUSTRIAL 10 OUTLET 90DEG POWERSTRIP
POSITIVE PRESSURE AIR COOLING SYSTEM
UNINTERRUPTABLE POWER SUPPLY

SL	---	SL	SL
PS	1	1	2
AC	---	AC	AC
UPS	---	UPS	UPS

VINZANT HOME SERVER CONFIGURATION GUIDE

PC SYSTEM CONFIGURATION

PART NO. VHS-LX VHS-EQ VHS-XL

COMPUTER SELECTION

WINDOWS PC

BYVINZANT
WATER COOLED
DELL HIGH PERFORMANCE
DELL STANDARD

V1	---	---	V1
WC	---	---	or
DHP	---	---	DHP
DS	---	DS	or
MP	---	MP	MP
NC	NC	---	---

APPLE MAC NONE

APPLE MAC PRO
NO COMPUTER

REMOTE BAY USB ACCESSORIES

USB

7-PORT HUB

UH	---	1	2
----	-----	---	---

USB GOOSENECK DEVICES

CAMERA / MICROPHONE
MICROPHONE
BLUE LED LIGHT
WHITE LED LIGHT
FAN / LED LIGHT

CM	---	CM	CM
M	---	---	M
BL	---	---	2
WL	---	---	1
FL	---	---	1

USB DEVICES

TURNTABLE
BLOOD PRESSURE KIT
LABEL PRINTER

TT	---	---	TT
BP	---	---	BP
LP	---	---	LP

ACCESSORY BUNDLES

AUTOMATION BUNDLE

HAL 2000 HOME AUTOMATION S/W
X10 PC INTERFACE - TEN X10 MODLES
UNIVERSAL X10 REMOTE

HA	---	---	HA
----	-----	-----	----

MULTIMEDIA BUNDLE

10 INK CARTRIDGES
4 REAMS HIGH QUALITY PAPER
4 BOXES PHOTOGRAPH PAPER
100 WRITEABLE DVD's
100 WRITEABLE CD's

MM	---	---	MM
----	-----	-----	----

CABLES BUNDLE

15 VARIOUS CABLES & ADAPTERS

CB	---	---	CB
----	-----	-----	----

VINZANT VARIETY BUNDLE

COLLECTION OF COOL PC ACCESSORIES

VV	---	---	VV
----	-----	-----	----



Apple Mac Pro



DELL XPS



USB
TURNTABLE



USB
BLOOD
PRESSURE
MONITOR



USB LABEL
PRINTER



USB GOOSENECK
ACCESSORIES

CABINET DIMENSIONS

	Height	Width	Depth	Display Depth	Keyboard Compartment Width
--	--------	-------	-------	---------------	----------------------------

OMNICENTER	58 in.	64 in.	28 in.	13"	30"
------------	--------	--------	--------	-----	-----

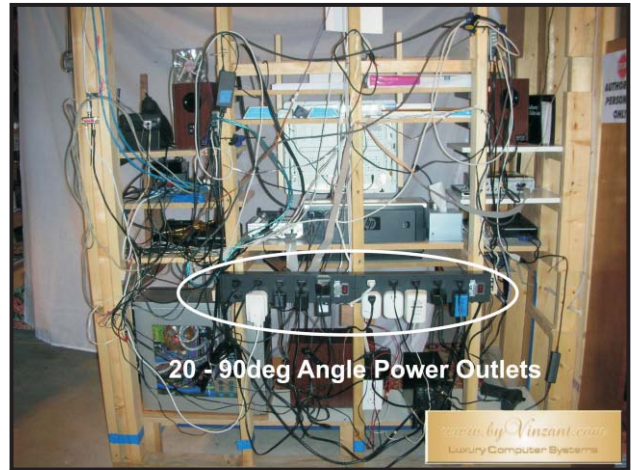
JUGGERNAUT	57 in.	60 in.	26"	10"	29"
------------	--------	--------	-----	-----	-----

BEHIND THE SCENES



- ① PC Case
- ② Touch Screen Display
- ③ Keyboard
- ④ Wireless Mouse
- ⑤ Audio System
- ⑥ Printer
- ⑦ USB Hub (in back)
- ⑧ UPS
- ⑨ Modem & Router
- ⑩ Remote DVD Drive 1 & 2
- ⑪ Remote Device Connectivity Module
- ⑫ Document Scanner
- ⑬ Media Storage (behind display)
- ⑭ Cordless Telephone
- ⑮ Remote PC Control Module w/USB (x2)
- ⑯ Lighting

Before the cabinet could be designed, a “complete” PC system had to be configured to establish dimensional requirements for components and cabling.

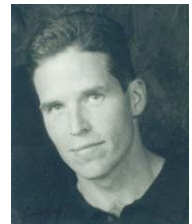


SUMMARY

Developing a complex product that has the potential of gaining widespread appeal requires years of research, engineering and development. The designs presented here have greatly evolved since inception 14 years ago.

This brochure is my portfolio and is a culmination of my life’s work.

Chris Vinzant Woolpert
Computer Entertainment
System Designer



Technology You Can Live With



contact information:

Chris Vinzant Woolpert
5028 SW 31st St.
Topeka, KS 66614
chriswoolpert@gmail.com
785-207-7836

